






**Stuyvesant High School Alumni Association
2018 Board of Directors Slate**

Name	Grad Year	Bio
<p>Christina Alfonso</p> 	2001	Christina graduated from Bryn Mawr. She is Co-Chair of the Alumni Association's Diversity Committee, where she actively engages its members in middle school outreach, diversity initiatives with current Stuyvesant students, and keeps everyone up to date regarding city and state legislation. She currently works in Clinical Research in the Department of Neurology at the Icahn School of Medicine at Mount Sinai Hospital.
<p>Edward Chapnick, MD</p> 	1977	Edward lives in Brooklyn and is Senior Vice Chair of Medicine and Director of the Infectious Diseases Division at Maimonides Medical Center, also in Brooklyn. His teaching experience includes being on the faculty of the Albert Einstein College of Medicine (Professor of Medicine), where he also serves on the Admissions Committee. He has been a mentor in the Alumni Association's Alumni Mentoring Program for the past three terms.
<p>Michael Hartig</p> 	1972	Michael Hartig is a Founding Partner of Capital Markets Advisors, bringing over 30 years of Banking & Capital Markets experience for a wide range of financial services institutions, including investment banks, private banks, mortgage companies, broker-dealers, asset managers, family offices, hedge funds, industry utilities and related service vendors. In addition to being a mentor in the Alumni Mentoring Program, Michael has been consistently involved in the Membership & Events Committees as well as Board meetings.
<p>Soo Kim</p> 	1993	Soo was a Founding Partner of Standard General and is the Managing partner and Chief Investment Officer of the firm. Soo is currently a member of the Board of Directors of Media General Inc (NYSE: MEG) and the Board of managers of ALST Casino Holdco, the owner and operator of the Aliante Casino in Las Vegas. He is also a Director of Greenwich House, and a Director of Coalition for Queens. He graduated with an A.B. from the Woodrow Wilson School of Public and International Affairs at Princeton University.
<p>Ling Wu Kong, JD</p> 	2001	Ling is an attorney practicing venture capital and mergers & acquisition law in New York for the past eight years. He is currently a partner in the New York office of McDermott Will & Emery LLP. He graduated with a B.A. from Columbia University and a J.D. from Boston University School of Law. While a student, Ling was active on The Spectator, The Indicator and participated in SING! He organized the five- and ten-year reunions for his graduating class. More recently, Ling has been actively helping, planning, and participating in different Alumni Association industry events.

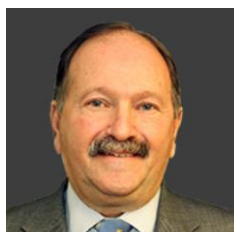
Michael Loebel



2005

After graduating from Stuyvesant in '05, Michael earned a degree in International Politics from Georgetown University's School of Foreign Service. He has spent the years after graduation working in Consulting and Finance, with an emphasis on data analysis, analytics, and technology. He is currently working as an Associate at McKinsey, where he specializes in analytics for the pharmaceutical industry. For the last few semesters, he has also served as a Mentor Leader for Stuyvesant's Alumni Mentoring Program.

Bart Schwartz, JD



1964

Bart has served as a trial lawyer, corporate advisor and CEO of a private company and a unit of a public company. For more than 30 years, he has managed complex investigations, prosecutions and security assessments, and provided sophisticated investigative services to a wide array of clients. Bart is currently the chairman of Guidepost Solutions and serves on the board of HMS Holdings Corp. (NASDAQ:HMSY) where he is Chairman of the Compliance Committee and a member of its Audit Committee.

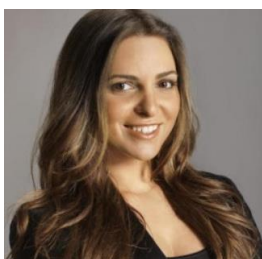
Lillian Seu, PhD



2001

Lillian attended Barnard College, then UCSF for her Ph.D. She then received an NIH Fogarty Clinical Research Fellowship in Zambia (2011-2014) to strengthen lab diagnostic platforms for HIV. Currently, she works as a scientific investigator at Bristol-Myers Squibb developing immunotherapies to cancer. Lillian is passionate about STEM mentorship and has served as a mentor for several Stuyvesant students as well as participated in prior healthcare career panels.

Eleonora Srugo



2004

Eleonora graduated from Boston University's School of Management. She joined the nation's fourth largest real estate company, Douglas Elliman, in 2009. She founded the SLS Team at Douglas Elliman in 2014 in the spirit of offering her client's a full service approach of unwavering integrity and professionalism. The team is expanding globally. As a member of the SHSAA, she runs the Alumni Mentoring Program and chairs the the Events Committee. She also organized her class's five-year and ten-year reunions